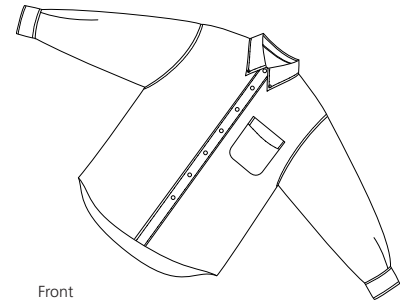
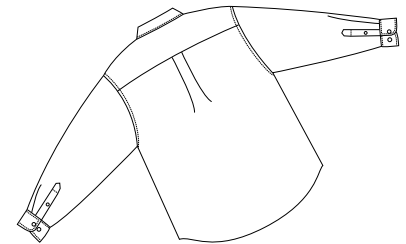


# Tall Long Sleeve Twill Shirt

PORT AUTHORITY®



Front



Back

## TLS600T

- \* 5-ounce \* 100% cotton twill \* Garment washed \* Double-needle stitched
- \* Button-down collar \* Patch pocket \* Back pleat \* Button-through sleeve plackets
- \* Adjustable cuffs

### Care Instructions:

Machine wash cold with like colors.  
Do not bleach. Do not dry clean.  
Tumble dry low. Warm iron if necessary.

### Finished Measurements in Inches

Size	L	XL	2XL	3XL	4XL
Width	24.5	26	27.5	29	30.5
Length	34.5	36	36.5	37.5	38
Sleeve	37	38.5	39.5	40.5	41.5
Collar	17	17.5	18	18.5	19

Width measured 1" below arm hole. Length measured from back neck seam to hem.

Sleeve length measured from center back seam to hem. Collar measured by circumference. Pocket WxH.

### Colors

	Black
	Classic Navy
	Faded Blue
	Stone
	White

### Please Note:

Colors shown are approximate and for reference only. No PMS match is possible on a heathered color garment. For exact match, returnable samples and grommeted samples are available.

### Color Chart

Color	Black	Classic Navy	Faded Blue	Stone	White
Textile PMS	19-4203TC	19-4040TC	18-3945TC	14-4501TC	11-0601TC
General PMS	Process Black	532C	7455C	7529C	No Match