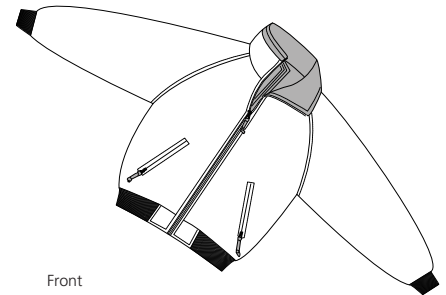
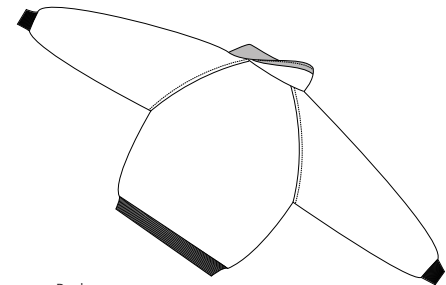


Tall Size Challenger Jacket

PORT AUTHORITY®



Front



Back

TL J754

- * Durable Teklon Nylon shell * Poly filled body w/ heavyweight fleece lining
- * Nylon-lined sleeves for easy on/off * 1 x 1 rib knit trim at waistband and cuffs
- * Lower slash pockets and two inside chest pockets w/ zip closures
- * Port Pocket™ for easy access to left chest & full back embroidery

Care Instructions:

Machine wash cold, gentle cycle.
Tumble dry low.
Cool iron if needed.
Do not bleach.

Finished Measurements in Inches

Size	LT	XLT	XXLT	XXXLT	XXXXLT
Chest	54	57	60	63	66
Length	29	30	31	32	32
Sleeve	38	39.5	41	42	43
Collar	4.25	4.25	4.25	4.25	4.25
Areas for Decoration	L/R Chest, Full Back		Port Pocket™		Left Underarm

Chest measured 1" below arm hole, full circumference. Length measured from center back neck seam to hem.
Sleeve measured from center back neck seam to cuff. Collar measured from center back neck seam to top of collar.

Colors

	True Black/ True Black*
	True Hunter/ True Navy*
	True Navy/ Grey Heather*

Please Note:

Colors shown are approximate and for reference only. For closest match see PMS colors, or for exact match, returnable samples and grommated samples are available.

Color Chart

Colors	True Black	True Hunter	True Navy
Textile PMS	19-4005TC	19-5917TC	19-4025TC
General PMS	426C	5535C	533C
Accent	Grey Heather	True Black	True Navy
Textile PMS	No Match	19-4005TC	19-4025TC
General PMS	No Match	Process Black	533C