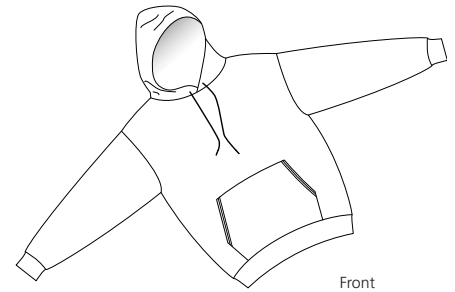
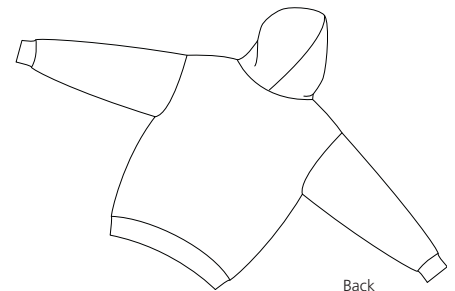


# Pullover Hooded Sweatshirt

PORT & COMPANY®



Front



Back

## PC90H

- \* 9-ounce \* 50/50 cotton/poly fleece \* Double-lined hood with grommets
- \* Matching drawcord \* Set-in sleeves \* Muff pocket

**Care Instructions:**  
Machine wash cold. Non-chlorine bleach when needed, Tumble dry medium. Do not iron decoration.

### Finished Measurements in Inches

Size	S	M	L	XL	2XL	3XL	4XL
Chest	20	22	24	26	28	30	32
Body	26	27.5	28.5	29.5	30.5	31.5	34
Sleeve	34	35	36	37	37.5	38	38.5

Neck measured by circumference, Chest width measured 1" below arm hole, Body length from back neck seam to hem, Sleeve length from center back to hem

### Colors

White
<b>Lights</b>
Ash
<b>Darks</b>
Athletic Heather
Black
Dark Green
Maroon
Navy
Orange
Purple
Red
Royal

### Color Chart

Colors	Ash	Athletic Heather	Black	Dark Green	Maroon	Navy
PMS	No Match	No Match	Process Black	5535C		296C
Colors	Orange	Purple	Red	Royal	White	
PMS	171C	273C	200C	661C	No Match	

**Please Note:**  
Colors shown are approximate and for reference only. For closest match see PMS colors, or for exact match, returnable samples and grommets samples are available.