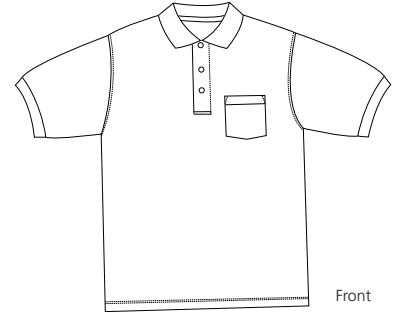
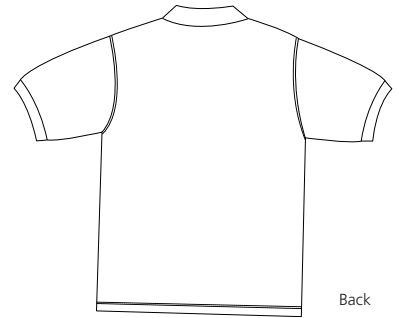


# Pique Knit Sport Shirt with Pocket

PORT AUTHORITY®



Front



Back

## K420P

- \* 7-ounce heavy weight pique \* 100% ring spun combed cotton \* Garment washed
- \* Welt collar and cuffs \* double-needle stitched \* Side vents \* Locher patch
- \* Horn tone buttons

### Care Instructions:

Machine wash cold with like colors.  
Do not bleach.  
Tumble dry low.  
Warm iron if necessary.

### Finished Measurements in Inches

Size	XS	S	M	L	XL	2XL	3XL	4XL	5XL	6XL
Chest	19	20.5	21.5	23.5	25.5	27	28.5	30	31.5	33
Shirt	25.5	26.5	30	31	32	33	33.5	34	34.5	35.5
Sleeve	9	9.5	11	11.5	12	12.5	13	13.5	14	14.5
Collar	15.5	16	16.5	17	17.5	18	18.5	19	19.5	20
Pocket	4.5x5	4.5x5	4.5x5	4.5x5	4.5x5.5	4.5x5.5	4.5x5.5	4.5x5.5	5x5.5	5x5.5

Chest width measured 1" below arm hole. Body length measured from back neck seam to hem.  
Sleeve length measured from shoulder seam to hem. Collar measured by circumference.

### Colors

	Black
	Dark Green
	Faded Blue
	Light Blue
	Navy
	Oxford
	Red
	Stone
	White

### Please Note:

Colors shown are approximate and for reference only. For closest match see PMS colors, or for exact match, returnable samples and grommited samples are available.

### Color Chart

Colors	Black	Dark Green	Faded Blue	Light Blue	Navy	Oxford	Red	Stone	White
Textile PMS	19-4006TC	19-5320TC	No Match	15-3920TC	19-3920TC	No Match	19-1764TC	14-1112TC	11-0601TC
General PMS	Process Black	5535C	7455C	284C	533C	No Match	187C	7502TC	No Match